

## **2. INSTALLATION AND LICENSE**

- Introduction
- System requirements
- Program installation





## INTRODUCTION

Ergo/IBV is a software application to assess work-related ergonomic risks developed by the Instituto de Biomecánica of Valencia (IBV).

Ergo/IBV is structured into the following assessment **modules**:

- **ErgoCheck**
- **Manual Material Handling – Single and Multiple**
- **Manual Material Handling – Variable**
- **Manual Material Handling – Sequential**
- **Manual Material Handling – Injured**
- **Manual Patient Handling [MAPO]**
- **Repetitive tasks**
- **OCRA Multitask**
- **Postures [OWAS]**
- **Postures [REBA]**
- **EN 1005-3 [FORCES]**
- **Office**
- **Ergo+50**
- **ErgoMater**

This application includes assessment procedures for ergonomic risks that meet the criteria set out in Article 5 of "Regulation of Prevention Services", included in the "Guidelines for Action" of the Work Inspection and Social Security (ITSS).

The application also includes a configuration mode that allows you to activate the use of the technical criteria set out in the standards ISO 11228, part 1, part 2 and part 3.

The evaluator should select the most suitable **module** to calculate the risk of the task under study. Sometimes you can choose to use more than one module to analyze the same task, since the assessment procedures are not necessarily mutually exclusive. Once the risk assessment module has been selected, the program displays user-friendly windows to enter the task data required to calculate the risk and get the reports.

Moreover, the module **Anthropometric design of the Workstation** allows you to obtain a report that includes design recommendations for the

workstation based on the characteristics both of the workstation and the tasks. Optionally, you can measure the worker, which will also allow you to get recommendations for a custom adjustment of the workstation.

Ergo/IBV integrates a website with relevant information and links. It also allows access to various web tools.

No special computer skills are required to use the software, basic knowledge as a computer user is enough; in any case, this manual describes its operation in detail.

## SYSTEM REQUIREMENTS

The Ergo/IBV software requires a computer with the following characteristics:

- Operative System Windows 8.1/10 running the 32-bit versions, Windows 8.1/10 and Windows Server 2012/2016/2019 running the 64-bit versions.
- An internet connection to access the Ergo/IBV license, the *Client Area*, the user manual and online updates.
- The video integrated in Ergo/IBV requires the following elements to watch the video on your computer:
  - If you are using a miniDV camera, you will need a card with IEEE 1394 port (FireWire or i.LINK).
  - If you are using a DVD camera, you will need a DVD player, and DVD codecs which are compatible with Microsoft Media Player.
  - If you are using other video files, you will need the video codecs associated to them.

## PROGRAM INSTALLATION

Ergo/IBV is designed to be installed and run on a Windows operating system in any of its workstation editions (Home, Professional, Enterprise, etc.). It is also possible to install the application in Windows Server and run it remotely by using Terminal Services.

In order to install the Ergo/IBV application, you must log in as a local administrator or user with the same privileges. Otherwise, the application will not install correctly.

In order to install the software, you must run the *setup.exe* file and the program will guide you through the whole installation so that you just have to follow the instructions.

The license installation starts when Ergo/IBV is installed, and it is completed with a **license activation**. If the license is not activated, the installation process will not be complete, and you will have a demo license instead of your commercial license.

When you run the application for the first time, you will be warned that no license has been detected. It will start by default in the DEMO mode and you will be asked if you want to activate a commercial license (Figure 1).

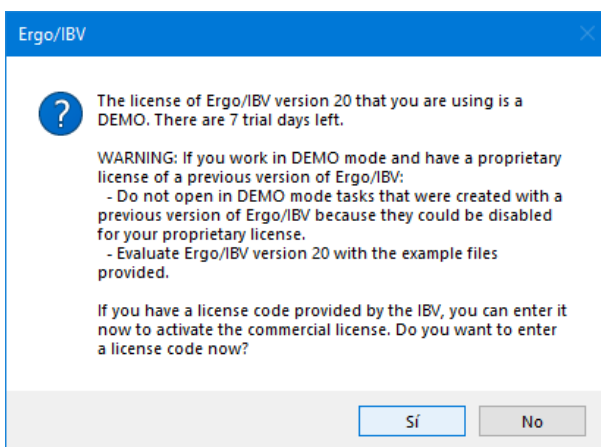


Figure 1. Ergo/IBV DEMO license warning

When you answer that you want to activate the license, the activation screen shown in Figure 2 will appear to enter the activation code that was provided together with the product.

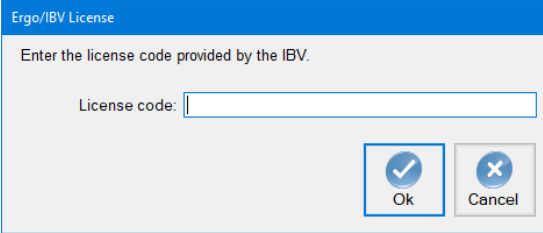
A screenshot of a software dialog box titled "Ergo/IBV License". The dialog has a blue header bar with the title. Below the header, the text "Enter the license code provided by the IBV." is displayed. Underneath this text is a label "License code:" followed by a white text input field with a blue border. At the bottom right of the dialog, there are two buttons: "Ok" with a blue checkmark icon and "Cancel" with a blue 'X' icon. Both buttons have a light gray background and a blue border.

Figure 2. Activation of Ergo/IBV commercial license